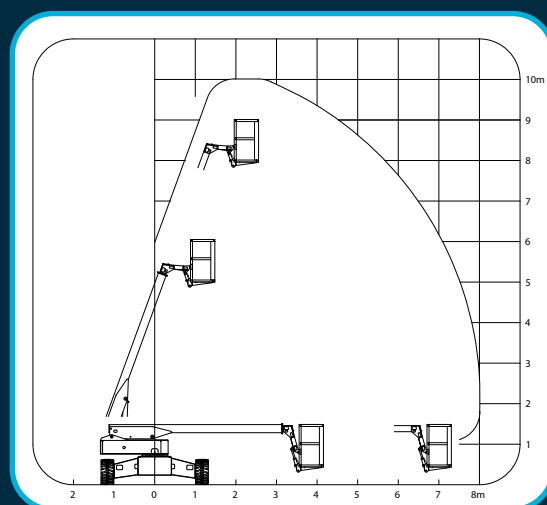


**ELEVATING  
WORK PLATFORMS**

SP100ST

SP100ST

Working Height	10.0m
Rated Capacity	150kg
Maximum Reach	8.0m
Slew	$\pm 90^\circ$
Travelling Height	1.5m
Travelling Length	5.5m
Maximum Width	2.7m
Mass (approx.)	3.4t

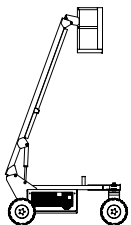


† + 61 3 9725 0077  
f + 61 3 9725 0044  
sales@nifty-lift.com.au

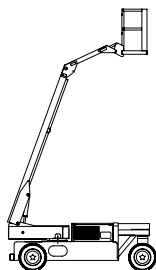
[www.nifty-lift.com.au](http://www.nifty-lift.com.au)

# SP100ST

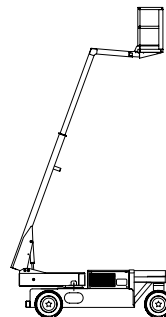
This is a self propelled 3 or 4 wheel, all wheel drive highly maneuverable elevating work platform with power steering. It has a telescoping boom which is capable of 90° slew in either direction.



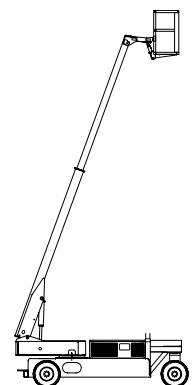
SPL60RN



SPO73SN



SPO84ST



SP100ST



**ELEVATING  
WORK PLATFORMS**

[www.nifty-lift.com.au](http://www.nifty-lift.com.au)

Don't forget to check out the rest  
of the Nifty-Lift range!



Boucher & Boucher Pty Ltd T/A

**NIFTY-LIFT**

ABN 32 050 197 218

t + 61 3 9725 0077  
f + 61 3 9725 0044

42B Orchard Street Kilsyth Vic. 3137  
P.O. Box 481 Kilsyth Vic. 3137

sales@nifty-lift.com.au  
[www.nifty-lift.com.au](http://www.nifty-lift.com.au)